



DELHI METRO RAIL CORPORATION LTD.
(Metro Bhawan, Fire Brigade Lane, Barakhamba Road, Delhi-110001)

Roll No.	www.studytosuccess.in
Participant Name	
Test Center Name	
Test Date	26/02/2020
Test Time	4:30 PM - 6:45 PM
Subject	Assistant Manager Electrical RE01

Section : Technical

Q.1 Consider a closed-loop system with transfer function $\frac{C(s)}{R(s)} = \frac{s^2 + 2s + 8}{s^2 + 2s^2 + 6s + 10}$.

Find the number of poles in right half of s plane and in left half of s plane.

- Ans
- 1. 3, 1
 - 2. 0, 3
 - 3. 3, 2
 - 4. 5, 4

Question ID : 6395132779
Status : Answered
Chosen Option : 2

Q.2 The measured value of a resistance is 20.25 Ω , whereas its true value is 20 Ω . Determine the absolute error.

- Ans
- 1. 1.0 Ω
 - 2. 0.5 Ω
 - 3. 5.0 Ω
 - 4. 0.25 Ω

Question ID : 6395132787
Status : Answered
Chosen Option : 4

Q.3 A charge Q is located at (0, 0, 3) and -Q is located at (0, 0, -3). The electric field intensity (E) at point (4, 0, 0) is:

- Ans
- 1. Negative X - direction
 - 2. Positive Y - direction
 - 3. Positive Z - direction
 - 4. Negative Z - direction

Question ID : 6395132743
Status : Not Answered
Chosen Option : --

Q.4 A 1- Φ transformer has total iron losses of 2500 W at 50 Hz and 400 V input supply voltage. When the applied voltage is 200 V and supply frequency is 25 Hz, the total iron loss is found to be 850 W. Calculate the eddy current loss at 400 V 50 Hz.

(consider V/f ratio as constant)

- Ans**
- 1. 2000 W
 - 2. 1600 W
 - 3. 1500 W
 - 4. 1000 W

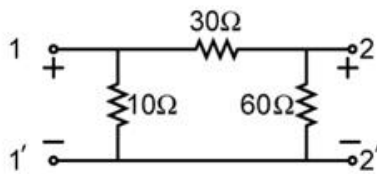
Question ID : 6395132755
Status : Marked For Review
Chosen Option : 2

Q.5 The per unit impedance of a synchronous machine is 0.242. If the base voltage is increased by 1.1 times, then the per unit impedance will be:

- Ans**
- 1. 1.0
 - 2. 0.6
 - 3. 0.8
 - 4. 0.2

Question ID : 6395132768
Status : Not Answered
Chosen Option : --

Q.6 For the two-port network shown here, find the values of Z_{11} and Z_{22} .



- Ans**
- 1. 10 Ω and 60 Ω
 - 2. 15 Ω and 20 Ω
 - 3. 30 Ω and 10 Ω
 - 4. 9 Ω and 24 Ω

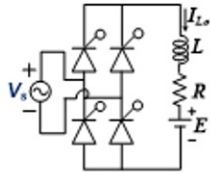
Question ID : 6395132739
Status : Answered
Chosen Option : 4

Q.7 Three identical resistors connected in star consume 4000 W when connected across balanced 3- Φ supply. What is the power consumed, if the three resistors are connected in delta across the same supply?

- Ans**
- 1. 20000 W
 - 2. 16000 W
 - 3. 4000 W
 - 4. 12000 W

Question ID : 6395132740
Status : Answered
Chosen Option : 4

Q.8 Figure shows 1- Φ full converter feeding RLE load with $X_L = 3\Omega$, $R = 4\Omega$, and $E = 10$ V. Determine the average value of load voltage for the average load current of $I_{L0} = 50$ A.



- Ans
- 1. 150
 - 2. 190
 - 3. 110
 - 4. 260

Question ID : 6395132806
 Status : Not Answered
 Chosen Option : --

Q.9 A n-bit Analog to Digital Converter (ADC) is required to convert an analog input in the range 0-5 V dc to an accuracy of 5 mV. What is the value of n? (where n denotes resolution of ADC)

- Ans
- 1. 8
 - 2. 10
 - 3. 12
 - 4. 9

Question ID : 6395132799
 Status : Answered
 Chosen Option : 2

Q.10 The fractional slip of 3- Φ induction motor is the ratio of:

- Ans
- 1. rotor copper loss / rotor output
 - 2. stator copper loss / stator input
 - 3. rotor copper loss / stator copper loss
 - 4. rotor copper loss / rotor input

Question ID : 6395132761
 Status : Answered
 Chosen Option : 3

Q.11 A 3- Φ , 5 kW induction motor has a p.f. of 0.75 lagging. A bank of capacitors is connected in delta across the supply terminals, then p.f. is raised to 0.9 lagging. Determine the kVAR rating of the capacitors connected in each phase.

- Ans
- 1. 0.313 kVAR
 - 2. 0.256 kVAR
 - 3. 0.663 kVAR
 - 4. 0.113 kVAR

Question ID : 6395132771
 Status : Not Answered
 Chosen Option : --

Q.12 Forward path transfer function of a unity feedback system is

$$G(s) = \frac{K}{(s + 5)(s + 10)(s + 15)}$$

Select appropriate value of K for the system to be oscillatory.

- Ans
- 1. 4000
 - 2. 5250
 - 3. 2400
 - 4. 7500

Question ID : 6395132780
 Status : Answered
 Chosen Option : 4

Q.13 If $f(t)$ is the step-response of a linear time invariant system, then its impulse response $h(t)$ is given by:

(where 't' indicates continuous time domain)

- Ans
- 1. $h(t) = \int f(t)$
 - 2. $h(t) = \frac{d}{dt} f(t)$
 - 3. $h(t) = [f(t)]^2$
 - 4. $h(t) = f(t)$

Question ID : 6395132746
 Status : Answered
 Chosen Option : 2

Q.14 An alternator has 18 slots per pole and the first coil lies in slots 1 and 16. Calculate the pitch factor of the coil for 3rd harmonic.

- Ans
- 1. 1.5
 - 2. 2.5
 - 3. 0.707
 - 4. 3.0

Question ID : 6395132764
 Status : Not Answered
 Chosen Option : --

Q.15 Two wattmeters are connected to measure the total power consumed by a 3- Φ load at 0.5 power factor lagging. The total power consumed by the load as indicated by the two wattmeters is 30 kW. Find the individual wattmeter readings.

- Ans
- 1. $W_1 = 10 \text{ kW} \ \& \ W_2 = 20 \text{ kW}$
 - 2. $W_1 = 15 \text{ kW} \ \& \ W_2 = 15 \text{ kW}$
 - 3. $W_1 = 5 \text{ kW} \ \& \ W_2 = 25 \text{ kW}$
 - 4. $W_1 = 30 \text{ kW} \ \& \ W_2 = 0$

Question ID : 6395132788
 Status : Answered
 Chosen Option : 4

Q.16 A series R-L-C circuit is supplied by 100 V, 50 Hz AC. What is the power factor of the circuit at resonance?

(where $R = 10 \Omega$, $L = 10 \text{ mH}$, $C = 100 \mu\text{F}$)

- Ans
- 1. Zero
 - 2. Unity
 - 3. 0.6 lagging
 - 4. 0.6 leading

Question ID : 6395132736
Status : Answered
Chosen Option : 2

Q.17 Determine average power of the signal

$$x(t) = \cos(2\pi f_0 t)$$

(where f_0 is the fundamental frequency and 't' indicates continuous time domain)

- Ans
- 1. 1.0 W
 - 2. 2.0 W
 - 3. 10 W
 - 4. 0.5 W

Question ID : 6395132748
Status : Answered
Chosen Option : 1

Q.18 Given is the magnetic field intensity $\vec{H} = 3\vec{a}_x + 7y\vec{a}_y + 2x\vec{a}_z$ A/m. Calculate the current density \vec{J} (A/m^2).

- Ans
- 1. $3\vec{a}_x$
 - 2. $-2\vec{a}_y$
 - 3. $12\vec{a}_y$
 - 4. $-7\vec{a}_z$

Question ID : 6395132741
Status : Answered
Chosen Option : 2

Q.19 The difference equation of the system is $2y(n - 2) - 3y(n - 1) + y(n) = 4x(n - 1) + x(n)$. Determine $Y(z)/X(z)$.

(all initial conditions are zero; 'n' represents discrete time signal, Y(z) is output signal and X(z) is input signal)

Ans

1. $\frac{z^2}{z^2 - 3z + 2}$

2. $\frac{4z}{z^2 - 3z}$

3. $\frac{z^2 + 4z}{z^2 - 3z + 2}$

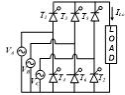
4. $\frac{z^2 + 4z}{3z + 2}$

Question ID : 6395132751

Status : Answered

Chosen Option : 3

Q.20 A 3- Φ full-wave converter as shown in the figure is operated from a 3- Φ Y-connected 208-V(line-line rms), 50-Hz supply and the load resistance is $R = 10 \Omega$. If the delay angle α is 60° , find the average output voltage?



Ans

1. 160.32 V

2. 140.45 V

3. 200.56 V

4. 100 V

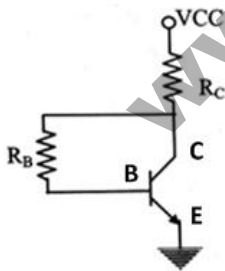
Question ID : 6395132807

Status : Answered

Chosen Option : 2

Q.21 For the common emitter configuration shown in the figure, find the value of R_C .

($V_{CC} = 15 \text{ V}$, $V_{CE} = 5 \text{ V}$, $I_C = 5 \text{ mA}$, current gain(β) = 100)



Ans

1. 1.98 k Ω

2. 2.54 k Ω

3. 3.56 k Ω

4. 4.20 k Ω

Question ID : 6395132791

Status : Answered

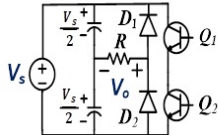
Chosen Option : 1

Q.22 Find the divergence of a vector $\vec{A} = x^2\hat{a}_x + 6y^2\hat{a}_y + z^3\hat{a}_z$ at point P (2, 4, 1).

- Ans
- 1. 10
 - 2. 24
 - 3. 16
 - 4. 55

Question ID : 6395132742
 Status : Answered
 Chosen Option : 4

Q.23 The single-phase half-bridge inverter as shown in the figure here has a resistive load with output power of 240 W and the DC input voltage of $V_s = 48$ V. Determine the value of load resistance (R) connected?



- Ans
- 1. 2.4 Ω
 - 2. 10 Ω
 - 3. 20.6 Ω
 - 4. 6.4 Ω

Question ID : 6395132805
 Status : Not Answered
 Chosen Option : --

Q.24 A unity feedback system is given by

$$G(s) = \frac{10(s+2)}{s^2(s+5)}$$

For input, $r(t) = 1 + 2t$, $t > 0$ the steady state error $e(t)$ is:

- Ans
- 1. infinity
 - 2. zero
 - 3. six
 - 4. five

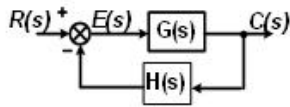
Question ID : 6395132778
 Status : Answered
 Chosen Option : 1

Q.25 A 4-pole, 50 Hz, 3- Φ induction motor has a slip of 6%. Calculate the speed of the motor.

- Ans
- 1. 1250 rpm
 - 2. 1350 rpm
 - 3. 1500 rpm
 - 4. 1410 rpm

Question ID : 6395132763
 Status : Answered
 Chosen Option : 4

Q.26 Find the range of K for the system shown in the figure to be stable.



where $G(s) = \frac{K}{s^2 + 2s + 4}$ and $H(s) = \frac{1}{s^2 + 3s + 5}$

- Ans
- 1. $-5 < K < -2$
 - 2. $-1 < K < 1$
 - 3. $-2 < K < 0$
 - 4. Unstable

Question ID : 6395132783

Status : Not Answered

Chosen Option : --

Q.27 The rating of 1- Φ , 2400/240 V two winding transformer is 50 kVA. It is reconnected as step up auto transformer with 2400 V as input. Find the kVA rating of auto transformer.

- Ans
- 1. 250 kVA
 - 2. 550 kVA
 - 3. 1000 kVA
 - 4. 750 kVA

Question ID : 6395132756

Status : Answered

Chosen Option : 2

Q.28 A 40 kVA, 100/400 V, 1- Φ , 50 Hz transformer has iron loss of 400 W and copper loss of 1600 W at full load. What is the efficiency of the transformer at half load with 0.8 power factor lagging?

- Ans
- 1. 95.2 %
 - 2. 86.6 %
 - 3. 99.1 %
 - 4. 90.8 %

Question ID : 6395132754

Status : Answered

Chosen Option : 1

Q.29 Distance protection relay is used in:

- Ans
- 1. transformer
 - 2. generator
 - 3. transmission line
 - 4. motor

Question ID : 6395132767

Status : Answered

Chosen Option : 3

Q.30 A 500 M VA, 18 kV alternator has reactance of 0.25 p.u. Find the per unit reactance of the alternator for the base value of 100 MVA, 20 kV.

- Ans
- 1. 0.2103 p.u.
 - 2. 0.1243 p.u.
 - 3. 0.4301 p.u.
 - 4. 0.0405 p.u.

Question ID : 6395132770

Status : Answered

Chosen Option : 4

Q.31 Select the correct relation [D = Duty cycle].

Ans Boost converter:

1.

$$\frac{V_{out}}{V_{in}} = \frac{1}{1-D}$$

Buck converter:

2.

$$\frac{V_{out}}{V_{in}} = 1-D$$

Boost converter:

3.

$$\frac{V_{out}}{V_{in}} = D$$

Buck-boost converter:

4.

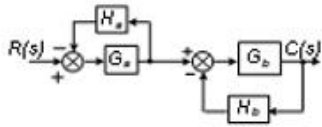
$$\frac{V_{out}}{V_{in}} = D$$

Question ID : 6395132800

Status : Answered

Chosen Option : 1

Q.32 Calculate the transfer function of the following system.



Ans

- ✓ 1. $\frac{G_a G_b}{1 + G_a H_a + G_b H_b + G_a G_b H_a H_b}$
- ✗ 2. $\frac{G_a G_b}{1 - G_a H_a - G_b H_b + G_a G_b H_a H_b}$
- ✗ 3. $\frac{G_a G_b}{1 + G_a G_b + H_b H_a}$
- ✗ 4. $\frac{G_a G_b}{1 + G_a G_b H_b + G_b H_a}$

Question ID : 6395132782

Status : Answered

Chosen Option : 1

Q.33 If a voltage-controlled bus is treated as a load bus, then which of the following limits would be violated?

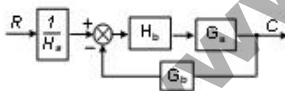
- ✗ 1. Active power
- ✓ 2. Reactive power
- ✗ 3. Phase angle
- ✗ 4. Energy

Question ID : 6395132769

Status : Answered

Chosen Option : 2

Q.34 Transfer function $\frac{C(s)}{R(s)}$ of the system shown in the figure here is:



Ans

- ✗ 1. $\frac{G_a G_b}{H_a (1 + G_a G_b H_b)}$
- ✗ 2. $\frac{G_a G_b}{1 + G_a G_b H_a H_b}$
- ✗ 3. $\frac{G_a G_b H_b}{H_a (1 + G_a G_b H_b)}$
- ✓ 4. $\frac{G_a H_b}{H_a (1 + G_a G_b H_b)}$

Question ID : 6395132781

Status : Answered

Chosen Option : 4

Q.35 A potential field is given by $V = 3x^2y - yz$. Find the electric field at $(1, 0, -1)$

- Ans
- 1. $4 \hat{a}_z$
 - 2. $-3 \hat{a}_x - 3 \hat{a}_y$
 - 3. $-4 \hat{a}_y$
 - 4. $3 \hat{a}_x + 4 \hat{a}_y$

Question ID : 6395132744
Status : Answered
Chosen Option : 3

Q.36 The armature resistance of an 18.65 kW 250 V dc series motor is 0.1Ω , the brush voltage drop is 3 V and series field resistance is 0.05Ω . When the motor takes 80 A, its speed is 600 rpm. Calculate the speed when the motor takes a current of 100 A.

- Ans
- 1. 556 rpm
 - 2. 315 rpm
 - 3. 474 rpm
 - 4. 653 rpm

Question ID : 6395132759
Status : Not Answered
Chosen Option : --

Q.37 The plot of armature torque(T_a) Vs armature current(I_a) of a dc series motor is:

(T_a on Y-axis and I_a on X-axis)

- Ans
- 1. parabola up to saturation and straight line afterwards
 - 2. straight line throughout
 - 3. constant (parallel to X-axis)
 - 4. parabola throughout

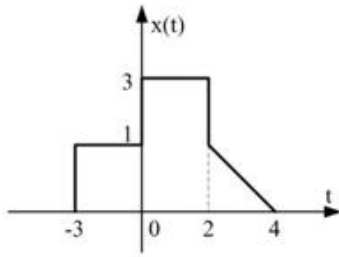
Question ID : 6395132760
Status : Answered
Chosen Option : 1

Q.38 A simple slide wire potentiometer is used for measurement of current in a circuit. The voltage drop across a standard resistor of 0.1Ω is balanced at 75 cm. Find the magnitude of current if the standard cell emf of 1.45 volt is balanced at 50 cm.

- Ans
- 1. 40 A
 - 2. 35 A
 - 3. 15.5 A
 - 4. 21.75 A

Question ID : 6395132785
Status : Not Answered
Chosen Option : --

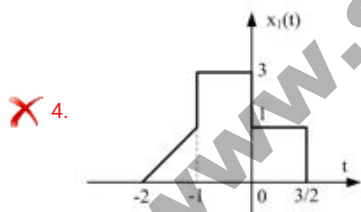
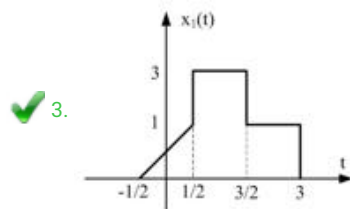
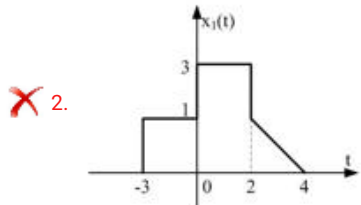
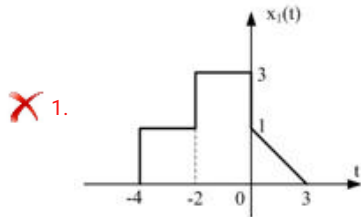
Q.39 Consider a signal $x(t)$ as shown in the figure here.



Plot the graph of $x(-2t+3)$.

(where 't' indicates continuous time domain)

Ans



Question ID : 6395132747

Status : Answered

Chosen Option : 3

Q.40 A buck converter has an input current of 2.4 A while required output current is 6 A. What will be the duty cycle of the converter? [Assume lossless system]

- Ans
- ✓ 1. 0.4
 - ✗ 2. 1.0
 - ✗ 3. 0.8
 - ✗ 4. 2.0

Question ID : 6395132801

Status : Answered

Chosen Option : 3

Q.41 Determine the Nyquist rate of signal $x(t) = \cos(200\pi t) * \sin(300\pi t)$ according to the sampling theorem.

(where 't' indicates continuous time domain)

- Ans
- 1. 150
 - 2. 100
 - 3. 500
 - 4. 250

Question ID : 6395132750
Status : Answered
Chosen Option : 2

Q.42 The starting current of an induction motor is five times the full load current while the full load slip is 8%. Find the ratio of starting torque to full load torque.

- Ans
- 1. 8.0
 - 2. 4.0
 - 3. 0.6
 - 4. 2.0

Question ID : 6395132762
Status : Answered
Chosen Option : 4

Q.43 What is the value of $(64)_{16} + (80)_{10}$?

- Ans
- 1. $(180)_{10}$
 - 2. $(76)_{10}$
 - 3. $(164)_{10}$
 - 4. $(100)_{10}$

Question ID : 6395132795
Status : Answered
Chosen Option : 1

Q.44 Consider the system

$$G(s)H(s) = \frac{1}{s(1+3s)(1+5s)}$$

Select the appropriate phase crossover frequency from the following options.

- Ans
- 1. 6 rad/sec
 - 2. 2.46 rad/sec
 - 3. 3.23 rad/sec
 - 4. 0.2582 rad/sec

Question ID : 6395132776
Status : Answered
Chosen Option : 3

Q.45 Which circuit parameter is predominant in the overhead lines?

- Ans
- 1. Inductance
 - 2. Capacitance
 - 3. Resistance
 - 4. Luminescence

Question ID : 6395132774
Status : Answered
Chosen Option : 2

Q.46 The amount of negative feedback applied to an amplifier reduces its gain by a factor of 10. Then the bandwidth:

- Ans
- 1. increases by a factor of 10
 - 2. decreases by a factor of 20
 - 3. decreases by a factor of 10
 - 4. remains the same

Question ID : 6395132792
Status : Answered
Chosen Option : 3

Q.47 Identify the number of prime implicants and essential prime implicants for the function

$$f(A, B, C, D) = \sum m(0, 1, 4, 6, 7, 8, 10, 14, 15)$$

(where 'm' represents minterms)

- Ans
- 1. 7, 2
 - 2. 6, 2
 - 3. 7, 1
 - 4. 6, 1

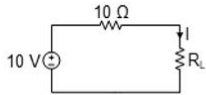
Question ID : 6395132798
Status : Answered
Chosen Option : 3

Q.48 A string insulator has 4 units. The voltage across the bottom most unit is 33.33% of the total voltage. Find the string efficiency.

- Ans
- 1. 25 %
 - 2. 66.67 %
 - 3. 33.33 %
 - 4. 75 %

Question ID : 6395132757
Status : Answered
Chosen Option : 4

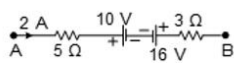
Q.49 Assume that the source in the circuit shown here is delivering maximum power to the load resistor. What is the total power loss?



- Ans
- 1. 5 W
 - 2. 2.5 W
 - 3. 20 W
 - 4. 10 W

Question ID : 6395132738
 Status : Answered
 Chosen Option : 2

Q.50 The figure shown here is a branch of an electric circuit where current is flowing from A to B. Find the value of voltage ($V_A - V_B$).



- Ans
- 1. 5 V
 - 2. 30 V
 - 3. 20 V
 - 4. 10 V

Question ID : 6395132733
 Status : Answered
 Chosen Option : 4

Q.51 The currents in a 3- Φ unbalanced system are: $I_R = (12 + j6)$ A; $I_Y = (12 - j12)$ A; $I_B = (-15 + j10)$ A. Calculate positive sequence component of the R-phase current by considering RYB as phase sequence.

- Ans
- 1. $(-1.85 - j5.47)$ A
 - 2. $(10.85 + j10.13)$ A
 - 3. $(3 + j5.47)$ A
 - 4. $(3 + j1.33)$ A

Question ID : 6395132772
 Status : Not Answered
 Chosen Option : --

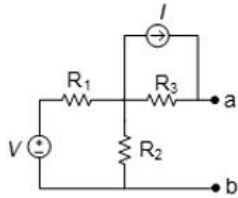
Q.52 The bus admittance matrix of a power system is given by
$$\begin{bmatrix} -j50 & j10 & j5 \\ j10 & -j30 & j10 \\ j5 & j10 & -j25 \end{bmatrix}$$
 The impedance of line between bus 2 and 3 will be equal to:

- Ans
- 1. $-j0.5$
 - 2. $j0.1$
 - 3. $j0.2$
 - 4. $-j0.2$

Question ID : 6395132766
 Status : Answered
 Chosen Option : 2

Q.53 Find the value of Norton resistance at the terminals a-b for the circuit shown here.

(where $V = 10\text{ V}$, $I = 5\text{ A}$, $R_1 = 9\ \Omega$, $R_2 = 18\ \Omega$, $R_3 = 4\ \Omega$)



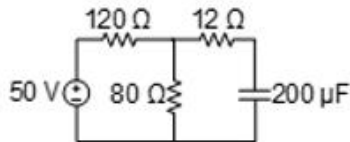
- Ans
- 1. $50\ \Omega$
 - 2. $25\ \Omega$
 - 3. $10\ \Omega$
 - 4. $20\ \Omega$

Question ID : 6395132737

Status : Answered

Chosen Option : 3

Q.54 Calculate the time constant for the RC circuit shown here.



- Ans
- 1. 25 ms
 - 2. 20 ms
 - 3. 12 ms
 - 4. 50 ms

Question ID : 6395132735

Status : Answered

Chosen Option : 3

Q.55 What is the magnetic field produced due to an infinite linear current carrying conductor?

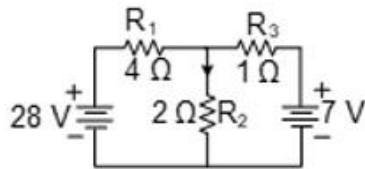
- Ans
- 1. $H = \mu I / 2\pi r\text{ A/m}$
 - 2. $H = I / 2\pi r\text{ A/m}$
 - 3. $H = \mu I / 2r\text{ A/m}$
 - 4. $H = I / r\text{ A/m}$

Question ID : 6395132745

Status : Answered

Chosen Option : 3

Q.56 Find the value of the current flowing in $2\ \Omega$ resistor?



- Ans
- 1. 6 A
 - 2. 4 A
 - 3. 10 A
 - 4. 15 A

Question ID : 6395132734
 Status : Answered
 Chosen Option : 2

Q.57 A dc shunt generator is delivering 20 kW at a terminal voltage of 200 V to a resistive load. The armature and shunt resistances are $0.5\ \Omega$ and $100\ \Omega$, respectively. Calculate the induced emf in the armature.

(neglect brush voltage drop)

- Ans
- 1. 251 V
 - 2. 292 V
 - 3. 202 V
 - 4. 351 V

Question ID : 6395132765
 Status : Not Answered
 Chosen Option : --

Q.58 In a negative feedback RC coupled amplifier, when the bypass capacitor is removed it acts as _____ topology.

- Ans
- 1. series-shunt
 - 2. series-series
 - 3. shunt-series
 - 4. shunt-shunt

Question ID : 6395132793
 Status : Answered
 Chosen Option : 3

Q.59 Select the correct option:

[ξ is the damping factor of second order system]

- Ans
- 1. $\xi = 1$; undershoot system
 - 2. $\xi = -2$; overshoot system
 - 3. $\xi = -1$; critical damped system
 - 4. $\xi = 0.5$; undershoot system

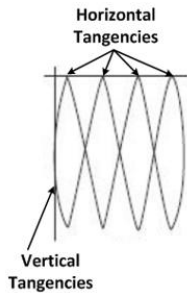
Question ID : 6395132777
 Status : Answered
 Chosen Option : 4

Q.60 For a 3- Φ , 50 HZ supply, calculate the ratio of output voltage ripple-frequency to the supply-voltage frequency of 6 pulse diode bridge rectifier.

- Ans
- 1. 3
 - 2. 12
 - 3. 2
 - 4. 6

Question ID : 6395132802
 Status : Answered
 Chosen Option : 1

Q.61 The Lissajous pattern observed in a CRO is shown here. What is the frequency ratio of the vertical signal to the horizontal signal?



- Ans
- 1. 3 : 2
 - 2. 2 : 5
 - 3. 4 : 1
 - 4. 5 : 2

Question ID : 6395132789
 Status : Answered
 Chosen Option : 3

Q.62 The transfer function of a system $H(s)$ is given by $H(s) = \frac{1}{s^2(s-2)}$. The impulse response of system is:

(* denotes convolution and $u(t)$ is unit step function)

- Ans
- 1. $(t^2 * e^{-2t})u(t)$
 - 2. $(t * e^{2t})u(t)$
 - 3. $(t^2 e^{-2t})u(t)$
 - 4. $(te^{-2t})u(t)$

Question ID : 6395132752
 Status : Answered
 Chosen Option : 2

Q.63 In a dc generator, the process of reversal of current in an armature coil as it crosses magnetic neutral axis is called:

- Ans
- 1. commutation
 - 2. demagnetisation
 - 3. armature reaction
 - 4. cross magnetisation

Question ID : 6395132758
 Status : Answered
 Chosen Option : 4

Q.64 Mention the power factor of 1- Φ full bridge diode rectifier supplying high inductive load.

- Ans
- 1. 1.5
 - 2. Less than 1
 - 3. 1
 - 4. Greater than 2

Question ID : 6395132804
Status : Answered
Chosen Option : 2

Q.65 A 200/2000 V, 1- Φ , 50 Hz transformer has primary and secondary resistance of 5 Ω and 20 Ω , respectively. Find the value of equivalent resistance of the transformer referred to the primary side.

- Ans
- 1. 20 Ω
 - 2. 10 Ω
 - 3. 5.2 Ω
 - 4. 12.4 Ω

Question ID : 6395132753
Status : Answered
Chosen Option : 3

Q.66 The incremental fuel cost for two generating units are given by

$$IC_1 = 10 + 0.2 PG_1$$

$IC_2 = 16 + 0.2 PG_2$, where PG_1 and PG_2 are real power generated by the units. Find the economic allocation for a total load of 170 MW.

(neglect transmission line loss)

- Ans
- 1. $PG_1 = 60$ MW, $PG_2 = 110$ MW
 - 2. $PG_1 = 80$ MW, $PG_2 = 90$ MW
 - 3. $PG_1 = 100$ MW, $PG_2 = 70$ MW
 - 4. $PG_1 = 120$ MW, $PG_2 = 50$ MW

Question ID : 6395132773
Status : Answered
Chosen Option : 3

Q.67 The Fourier transform of $x(t) = te^{-|t|}$
(where 't' indicates continuous time domain)

Ans

1. $X(\omega) = \frac{4}{(1 + \omega^2)^2}$

2. $X(\omega) = \frac{-j4\omega}{(1 + \omega^2)^2}$

3. $X(\omega) = \frac{-j4}{(1 + \omega^2)^2}$

4. $X(\omega) = \frac{-4}{(1 + \omega^2)^2}$

Question ID : 6395132749

Status : Answered

Chosen Option : 3

Q.68 A 3- Φ , 6 pulse diode bridge rectifier is supplied by $(100 * \pi) / \sqrt{6} V$ ($\frac{rms}{phase}$), 50 Hz. Find the average output voltage.

Ans

1. 300 V

2. 900 V

3. 100 V

4. 500 V

Question ID : 6395132803

Status : Not Answered

Chosen Option : --

Q.69 Consider an open-loop transfer function $G(s) = \frac{K(s+2)}{(s+0.5)(s+4)}$ with unity feedback. For $K > 6$, stability characteristic of the open-loop and closed-loop configurations of the system is:

Ans

1. unstable and stable

2. unstable and unstable

3. stable and unstable

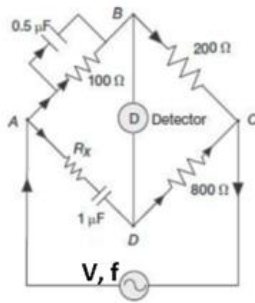
4. stable and stable

Question ID : 6395132784

Status : Answered

Chosen Option : 1

Q.70 In the circuit shown here, find the value of R_x at which the ac bridge is balanced.



- Ans
- 1. 100 Ω
 - 2. 200 Ω
 - 3. 350 Ω
 - 4. 250 Ω

Question ID : 6395132786
 Status : Answered
 Chosen Option : 3

Q.71 Find the number of 2 x 1 MUX (multiplexers) required to implement 16 x 1 MUX.

- Ans
- 1. 15
 - 2. 20
 - 3. 5
 - 4. 9

Question ID : 6395132797
 Status : Answered
 Chosen Option : 2

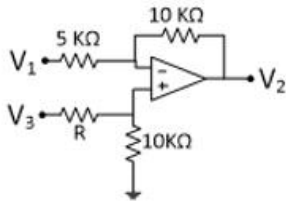
Q.72 Determine the minimised expression of Boolean function.

$$F = \bar{X}\bar{Z} + \bar{Y}\bar{Z} + Y\bar{Z} + XYZ$$

- Ans
- 1. $\bar{X}\bar{Y} + Z$
 - 2. $\bar{Z} + XY$
 - 3. $\bar{X}\bar{Y} + Z$
 - 4. XYZ

Question ID : 6395132796
 Status : Answered
 Chosen Option : 2

Q.73 In the circuit shown here, find the value of R such that $V_2 = 0.5V_3 - 2V_1$



- Ans
- 1. 75 kΩ
 - 2. 25 kΩ
 - 3. 50 kΩ
 - 4. 100 kΩ

Question ID : 6395132794

Status : Not Answered

Chosen Option : --

Q.74 Calculate the gain margin of the system G(s) with unity feedback. Where G(s) is given as

$$G(s) = \frac{5}{s(s+5)(s+15)}$$

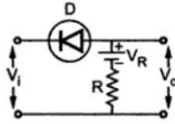
- Ans
- 1. $20 \log_{10} 500$ dB
 - 2. $20 \log_{10} 300$ dB
 - 3. $20 \log_{10} 50$ dB
 - 4. $20 \log_{10} 100$ dB

Question ID : 6395132775

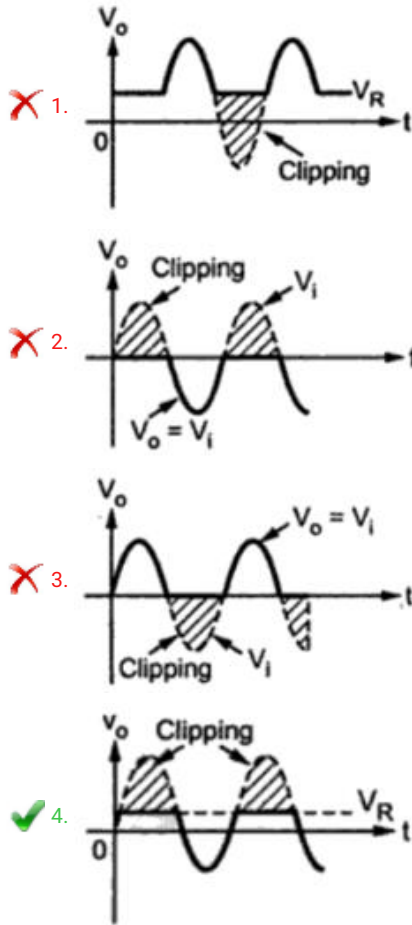
Status : Answered

Chosen Option : 2

Q.75 Identify the output voltage waveform (V_o) of the clipper circuit shown in the figure here, where V_i is sinusoidal input to the circuit.



Ans



Question ID : 6395132790

Status : Answered

Chosen Option : 4

Section : General Awareness

Q.1 Who has hit the most sixes during the entire tournament, making a record total of 36, in the ICC Cricket World Cup 2015?

- Ans
- 1. Ricky Ponting
 - 2. Abraham Benjamin (AB) de Villiers
 - 3. Sachin Tendulkar
 - 4. Kumar Sangakkara

Question ID : 6395132819

Status : Answered

Chosen Option : 4

Q.2 Hyperinflation is when prices skyrocket more than ____ a month.

- Ans
- 1. 50%
 - 2. 10%
 - 3. 30%
 - 4. 20%

Question ID : 6395132816
Status : Answered
Chosen Option : 1

Q.3 पृथ्वी के ऊपरी क्रोड और निचले क्रोड के बीच के अनिरंतरता (डिस्कंटीन्यूटी) को _____ कहा जाता है।

- Ans
- 1. कॉनराड अनिरंतरता (डिस्कंटीन्यूटी)
 - 2. लेहमन अनिरंतरता (डिस्कंटीन्यूटी)
 - 3. रेपेटी अनिरंतरता (डिस्कंटीन्यूटी)
 - 4. मोहो अनिरंतरता (डिस्कंटीन्यूटी)

Question ID : 6395132813
Status : Answered
Chosen Option : 2

Q.4 RTI अधिनियम आपको _____ दिनों के भीतर सूचना के माध्यम से उत्तर प्राप्त करने का अधिकार देता है।

- Ans
- 1. 40
 - 2. 15
 - 3. 30
 - 4. 60

Question ID : 6395132814
Status : Answered
Chosen Option : 3

Q.5 _____ is the frozen water part of the Earth water system.

- Ans
- 1. Mesosphere
 - 2. Troposphere
 - 3. Cryosphere
 - 4. Lithosphere

Question ID : 6395132811
Status : Marked For Review
Chosen Option : 2

Q.6 Which state government has unveiled the world's 2nd tallest statue of Vallabhbai Patel?

- Ans
- 1. Madhya Pradesh
 - 2. Gujarat
 - 3. Rajasthan
 - 4. Maharashtra

Question ID : 6395132820
Status : Answered
Chosen Option : 2

Q.7 भारतीय प्रधान मंत्री ने 15 अगस्त, 2019 को _____ के केंद्रीय द्वार पर देश का झंडा फहराया।

- Ans
- 1. ताजमहल
 - 2. इंडिया गेट
 - 3. लाल क़िला
 - 4. आगरा का क़िला

Question ID : 6395132810
Status : Answered
Chosen Option : 2

Q.8 Nearly 84% of the earth's volume and 67% of the earth's mass is occupied by the _____.

- Ans
- 1. mantle
 - 2. core
 - 3. crust
 - 4. hydrosphere

Question ID : 6395132812
Status : Answered
Chosen Option : 4

Q.9 सुभाष चंद्र बोस, _____ की मदद से, ब्रिटिश सेनाओं से लड़ने से पहले और न केवल अंडमान और निकोबार द्वीप समूह को अंग्रेजों से मुक्त कराया बल्कि भारत की उत्तर-पूर्वी सीमा में भी प्रवेश किया।

- Ans
- 1. दक्षिण अफ्रीका
 - 2. संयुक्त राज्य
 - 3. जापान
 - 4. चीन

Question ID : 6395132809
Status : Answered
Chosen Option : 3

Q.10 _____ उत्तर पूर्व भारत में स्थित असम का एक प्रसिद्ध नृत्य है जिसका अर्थ है बॉडी ऑफ़ डांस।

- Ans
- 1. मोहिनीअट्टम
 - 2. कूचिपूड़ी
 - 3. छाऊ
 - 4. सत्रीया

Question ID : 6395132818
Status : Answered
Chosen Option : 3

Q.11 कुतुब मीनार स्थल दिल्ली में मामलुक राजवंश के संस्थापक _____ द्वारा शुरू किया गया था।

- Ans
- 1. मुहम्मद बिन तुगलक
 - 2. कुतुब उद-दीन ऐबक
 - 3. इब्राहिम लोदी
 - 4. फ़िरोज़ शाह तुगलक

Question ID : 6395132808
Status : Answered
Chosen Option : 2

Q.12 27 मार्च, 2019 को प्रधान मंत्री नरेंद्र मोदी ने घोषणा की कि भारत ने खुद को दुनिया के _____ सबसे बड़े अंतरिक्ष सुपर पावर के रूप में स्थापित किया है।

- Ans
- 1. सातवाँ
 - 2. चौथा
 - 3. तीसरा
 - 4. दूसरा

Question ID : 6395132821
Status : Answered
Chosen Option : 2

Q.13 भारतीय संविधान का कौन सा हिस्सा हमारे राज्य के नीति निर्देशक तत्व से संबंधित है?

- Ans
- 1. भाग IV
 - 2. भाग III
 - 3. भाग VI
 - 4. भाग V

Question ID : 6395132815
Status : Answered
Chosen Option : 1

Q.14 Indian economy is considered a _____ as it has well defined areas for functioning of public and private sectors and economic planning.

- Ans
- 1. Traditional economy
 - 2. Market economy
 - 3. Mixed economy
 - 4. Planned economy

Question ID : 6395132817
Status : Answered
Chosen Option : 3

Q.15 Justice _____ was on November 18, 2019, sworn in as the 47th Chief Justice of India.

- Ans
- 1. Dipak Misra
 - 2. T. S. Thakur
 - 3. Sharad Arvind Bobde
 - 4. Ranjan Gogoi

Question ID : 6395132822
Status : Answered
Chosen Option : 3

Section : Quantitative Aptitude

Q.1 Select the quadratic equation whose sum of roots is 4 and product of roots is 1.

- Ans
- 1. $x^2 - 4x - 1 = 0$
 - 2. $x^2 - 4x + 1 = 0$
 - 3. $x^2 - 5x - 1 = 0$
 - 4. $x^2 + 4x + 1 = 0$

Question ID : 6395132837

Status : Answered

Chosen Option : 2

Q.2 If the ratio of Ram and Sham's marks is 2 : 5 and Sham and Ganesh's marks is 3 : 7, then what is the ratio of Ram and Ganesh's marks?

- Ans
- 1. 15 : 35
 - 2. 6 : 35
 - 3. 6 : 5
 - 4. 6 : 15

Question ID : 6395132825

Status : Answered

Chosen Option : 2

Q.3 एक कंटेनर पानी से भरा हुआ है। इसमें से 36 लीटर पानी निकाल कर इसे दूध से भर दिया जाता है। फिर से 36 लीटर मिश्रण निकालकर कंटेनर को फिर से दूध से भर दिया जाता है। यदि पानी और दूध का अनुपात 36 : 13 है, तो कंटेनर में मौजूद द्रव की मात्रा ज्ञात कीजिए।

- Ans
- 1. 250 लीटर
 - 2. 352 लीटर
 - 3. 253 लीटर
 - 4. 252 लीटर

Question ID : 6395132829

Status : Not Answered

Chosen Option : --

Q.4 The sum of series $0.7 + 0.77 + 0.777 + \dots$ up to 25 terms is:

- Ans
- 1. $\frac{7}{81} [220 + \frac{1}{10^{25}}]$
 - 2. $\frac{7}{81} [225 + \frac{1}{10^{25}}]$
 - 3. $\frac{7}{81} [224 + \frac{1}{10^{25}}]$
 - 4. $\frac{7}{81} [223 + \frac{1}{10^{25}}]$

Question ID : 6395132833

Status : Not Answered

Chosen Option : --

Q.5 Arun travels a distance of 15 km in 1 hour. In how many hours will he travel a distance of 165 km?

- Ans
- 1. 14 hours
 - 2. 12 hours
 - 3. 11 hours
 - 4. 13 hours

Question ID : 6395132830
Status : Answered
Chosen Option : 3

Q.6 What is the compound interest on ₹1,400 at 20% per annum in 2 years?

- Ans
- 1. ₹613
 - 2. ₹614
 - 3. ₹615
 - 4. ₹616

Question ID : 6395132826
Status : Answered
Chosen Option : 4

Q.7 किसी दूध विक्रेता के पास तीन प्रकार के दूध हैं, जिनकी मात्राएं क्रमशः 276, 322 और 414 लीटर हैं। विक्रेता उन्हें बिना आपस में मिलाए समान धारिता वाले कंटेनरों की न्यूनतम संख्या में रखना चाहता है। प्रत्येक कंटेनर की धारिता और आवश्यक कंटेनरों की संख्या ज्ञात कीजिए।

- Ans
- 1. 46 लीटर और 22 कंटेनर
 - 2. 276 लीटर और 22 कंटेनर
 - 3. 322 लीटर और 46 कंटेनर
 - 4. 46 लीटर और 23 कंटेनर

Question ID : 6395132824
Status : Not Answered
Chosen Option : --

Q.8 Arun buys a scooter at ₹14,000 and sells it at a loss of 25%. What is the selling price of the scooter?

- Ans
- 1. ₹10,520
 - 2. ₹10,530
 - 3. ₹10,500
 - 4. ₹10,510

Question ID : 6395132827
Status : Answered
Chosen Option : 3

Q.9 A biquadratic equation has how many possible roots?

- Ans
- 1. 4
 - 2. 2
 - 3. 5
 - 4. 3

Question ID : 6395132836
Status : Answered
Chosen Option : 1

Q.10 If the average of the numbers 10, 15, x, 25, 35 and 45 is 25, then what will be the value of x?

- Ans
- 1. 23
 - 2. 21
 - 3. 20
 - 4. 25

Question ID : 6395132832
Status : Answered
Chosen Option : 3

Q.11 The HCF of decimal numbers 1.5, 2.05 and 3.5 is:

- Ans
- 1. 1.5
 - 2. 2.5
 - 3. 2.05
 - 4. 0.05

Question ID : 6395132823
Status : Answered
Chosen Option : 4

Q.12 The value of $\sin 75^\circ$ is:

- Ans
- 1. $\frac{\sqrt{2}(\sqrt{3}+1)}{4}$
 - 2. $\frac{\sqrt{2}(\sqrt{3}+2)}{4}$
 - 3. $\frac{\sqrt{2}(\sqrt{3}+3)}{4}$
 - 4. $\frac{\sqrt{2}(\sqrt{3}+4)}{4}$

Question ID : 6395132835
Status : Answered
Chosen Option : 1

Q.13 एक मंदिर के शीर्ष पर एक ध्वज लगाया गया है। मंदिर के आधार से 15 m की दूरी पर स्थिति एक बिंदु से ध्वज के शीर्ष और मंदिर के शीर्ष के उन्नयन कोण क्रमशः 60° और 45° हैं। ध्वजदंड की लंबाई ज्ञात कीजिए।

- Ans
- 1. $17(\sqrt{3}-1)$ m
 - 2. $14(\sqrt{3}-1)$ m
 - 3. $15(\sqrt{3}-1)$ m
 - 4. $16(\sqrt{3}-1)$ m

Question ID : 6395132834

Status : Answered

Chosen Option : 3

Q.14 राजू और रूपेंद्र एक साथ मिलकर किसी कार्य को 9 दिनों में पूरा कर सकते हैं। राजू, रूपेंद्र से $\frac{2}{5}$ गुना कुशल है। राजू अकेले 1 दिन में उस कार्य के कितने हिस्से को पूरा कर सकता है?

- Ans
- 1. $\frac{5}{126}$
 - 2. $\frac{9}{126}$
 - 3. $\frac{11}{126}$
 - 4. $\frac{7}{126}$

Question ID : 6395132831

Status : Answered

Chosen Option : 2

Q.15 एक आदमी एक मोबाइल बेचता है। यदि मोबाइल को ₹22,000 में बेचने पर हुआ प्रतिशत लाभ, उसी मोबाइल को ₹18,000 में बेचने पर हुई प्रतिशत हानि के बराबर है, 35% लाभ प्राप्त करने के लिए मोबाइल का विक्रय मूल्य ज्ञात कीजिए।

- Ans
- 1. ₹25,000
 - 2. ₹23,000
 - 3. ₹17,000
 - 4. ₹27,000

Question ID : 6395132828

Status : Answered

Chosen Option : 4

Section : General Intelligence and Reasoning

Q.1 एक श्रृंखला दी गई है जिसमें एक पद लुप्त है। दिए गए विकल्पों में से सही विकल्प का चयन करें जो श्रृंखला को पूरा करेगा।
e2, j6, o12, t20, _____

- Ans
- 1. y30
 - 2. z30
 - 3. z25
 - 4. y25

Question ID : 6395132842

Status : Answered

Chosen Option : 1

Q.2 उस विकल्प का चयन करें जो उसी आधार पर तीसरे पद से संबंधित है जैसे दूसरा पद पहले पद से संबंधित है।
आग : धुआं :: ? : ?

- Ans
- 1. छत : घर
 - 2. बंदूक : गोली
 - 3. दीवारे : स्तंभ
 - 4. रसोई : बगीचा

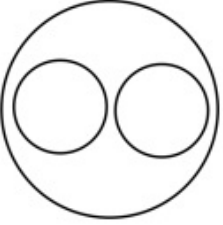
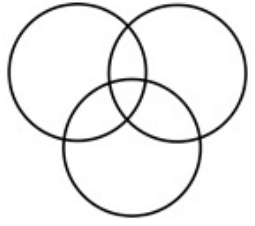
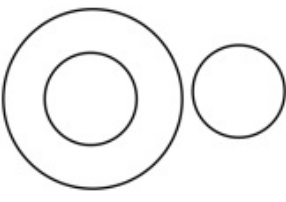

Question ID : 6395132845

Status : Answered

Chosen Option : 2

Q.3 दिए गए शब्दों में निम्नलिखित में से कौन सही संबंध दर्शाता है?
धातु, एल्युमिनियम, सोडियम

Ans

- 1. 
- 2. 
- 3. 
- 4. 

Question ID : 6395132847

Status : Answered

Chosen Option : 3

Q.4 A series is given with one term missing. Select the correct alternative from the given ones that will complete the series.
15, 16, 20, 21, 26, ?

- Ans
- 1. 31
 - 2. 28
 - 3. 27
 - 4. 30

Question ID : 6395132840

Status : Answered

Chosen Option : 3

Q.5 The statements below are followed by two conclusions labeled 1 and 2. Assuming that the information in the statement is true, even if it appears to be at variance with generally established facts, decide which conclusion(s) logically and definitely follow(s) from the information given in the statement.

Give answer:

- (A) If only conclusion I follows
- (B) If only conclusion II follows
- (C) If either I or II follows
- (D) If both I and II follow.

STATEMENT : Aerated drinks are harmful for health .

CONCLUSION 1: Leads to increase in amount of fat

CONCLUSION 2: Leads to insulin resistance.

- Ans
- 1. A
 - 2. D
 - 3. C
 - 4. B

Question ID : 6395132838
Status : Answered
Chosen Option : 2

Q.6 A series is given with one term missing. Select the correct alternative from the given ones that will complete the series.
Z 100, X81, T64, ?

- Ans
- 1. P50
 - 2. N50
 - 3. P49
 - 4. N49

Question ID : 6395132841
Status : Answered
Chosen Option : 4

Q.7 दिए गए क्रम में: 6&pQ@231qsY#
क्रमशः अनुक्रम के उल्टे क्रम में #@ की स्थिति का पता लगाएं।

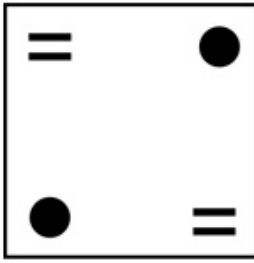
- Ans
- 1. 1, 5
 - 2. 11,8
 - 3. 1, 8
 - 4. 10, 12

Question ID : 6395132843
Status : Answered
Chosen Option : 3

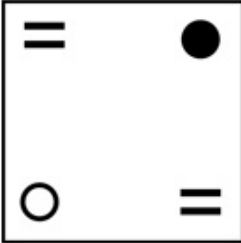
Q.8 Out of the given options, three are similar in a certain manner. However, one option is NOT like the other three. Select the option which is different from the rest.

Ans

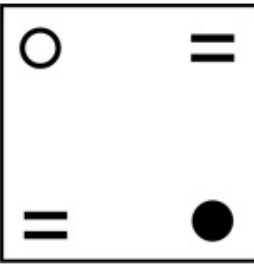
✓ 1.



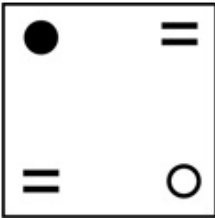
✗ 2.



✗ 3.



✗ 4.



Question ID : 6395132846

Status : Answered

Chosen Option : 1

Q.9 नीचे दिए गए प्रश्न में, एक कथन दिया गया है जिसके बाद दो निष्कर्ष I और II दिए गए हैं। आपको कथन में दिए गए सब कुछ को सत्य मान लेना है, फिर दो निष्कर्षों पर एक साथ विचार करें और निर्णय लें कि कथन में दी गई जानकारी में से कौन सा तार्किक रूप से एक उचित संदेह से परे है।

उत्तर दीजिए:

- (A) यदि केवल निष्कर्ष I का अनुसरण करता है
- (B) यदि केवल निष्कर्ष II का अनुसरण करता है
- (C) यदि I या II अनुसरण करते हैं
- (D) यदि I और II दोनों अनुसरण करते हैं

कथन: सूर्य में हिलियम की भारी मात्रा होती है। सूर्य एक विशिष्ट मध्य आकार का तारा है।

निष्कर्ष 1: अधिकांश मध्य आकार के तारों में कुछ हिलियम होगा।

निष्कर्ष 2: बड़े तारों में छोटे तारों की तुलना में अधिक हिलियम होता है।

Ans ✓ 1. A

✗ 2. B

✗ 3. D

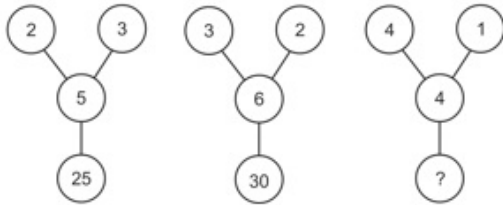
✗ 4. C

Question ID : 6395132839

Status : Answered

Chosen Option : 1

Q.10 Find the missing number in the following number series.



- Ans 1. 20
 2. 16
 3. 9
 4. 17

Question ID : 6395132852
Status : Not Answered
Chosen Option : --

Q.11 Out of the given options, three are similar in a certain manner. However, one option is NOT like the other three. Select the option which is different from the rest.

- Ans 1. NILE
 2. K2
 3. ALPS
 4. MOUNT EVEREST

Question ID : 6395132844
Status : Answered
Chosen Option : 1

Q.12 The letters of the following word, when arranged, form an appropriate word.

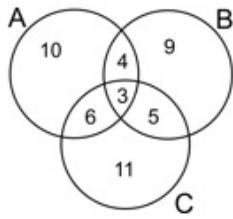
T V L I E O N

What is the position of alphabet 'T' in the word formed?

- Ans 1. 7
 2. 2
 3. 1
 4. 6

Question ID : 6395132851
Status : Not Answered
Chosen Option : --

Q.13 In the given figure, A represents people liking APPLES, B represents people liking BANANAS, C represents people liking CHIKOO.
How many people like ONLY APPLES?



- Ans
- 1. 6
 - 2. 3
 - 3. 4
 - 4. 10

Question ID : 6395132848
Status : Answered
Chosen Option : 4

Q.14 Find the missing number in the following number series.

30	15	4
60	12	10
96	16	?

- Ans
- 1. 16
 - 2. 14
 - 3. 18
 - 4. 12

Question ID : 6395132850
Status : Answered
Chosen Option : 4

Q.15 Arrange the following in a meaningful sequence:

- 1) Pond
- 2) Lake
- 3) Sea
- 4) Ocean

- Ans
- 1. 2314
 - 2. 1432
 - 3. 1234
 - 4. 4123

Question ID : 6395132849
Status : Answered
Chosen Option : 3

Section : General English

Comprehension:

A passage is given with five questions following it. Read the passage carefully and select the best answer to the given question out of the given four options.

It is well known that Technology adds a lot of efficiency when it comes to today's lifestyle, especially with regards to healthcare from what we know and hear about all the time.

The adoption of electronic health records helps eliminate a lot of repetitive testing that can add to savings and help with deficit reduction. The electronic record also makes easier for disease and care management for individuals.

The integration of information into one source can improve efficiency and help eliminate additional steps of obtaining patient information from multiple sources. Providers find it easier to perform tasks such as processing claims and billing. A provider can access a patient record with speed and ease. With all this information available a provider can also make a quick informed decision that ultimately can affect a patient's outcome of care management that could have a long term effect to one's health in the future.

With patient information being available in a centralized location the use of Decision support systems come into play by using this combined source to aid in care management, medication management and also drug interactions for a patient. There is a reduced likelihood of errors and this also eliminates duplication

Even though a physician can potentially reduce his overhead through say the use of an electronic scanner instead of paper claims, and reduce the number of office staff employed at the practice. There could also be some short term unforeseen negative effects as a result of this. What happens to all the people who normally manage these functions? This is an indirect negative effect of technology in the short term, where some of these jobs will slowly be replaced by a few highly skilled specialized individuals or by computer systems.

So despite there being a positive effect to reduce healthcare costs and improve the overall strain healthcare has on the national deficit, the short term effects of job reduction from this is also impending.

SubQuestion No : 1

Q.1 Select a suitable title to the passage from among the given options.

- Ans
- 1. The free availability of patient information.
 - 2. Strain of healthcare on the national deficit.
 - 3. Ways to increase efficiency and manage costs.
 - 4. The role of technology in our healthcare system.

Question ID : 6395132854

Status : Answered

Chosen Option : 4

Comprehension:

A passage is given with five questions following it. Read the passage carefully and select the best answer to the given question out of the given four options.

It is well known that Technology adds a lot of efficiency when it comes to today's lifestyle, especially with regards to healthcare from what we know and hear about all the time.

The adoption of electronic health records helps eliminate a lot of repetitive testing that can add to savings and help with deficit reduction. The electronic record also makes easier for disease and care management for individuals.

The integration of information into one source can improve efficiency and help eliminate additional steps of obtaining patient information from multiple sources. Providers find it easier to perform tasks such as processing claims and billing. A provider can access a patient record with speed and ease. With all this information available a provider can also make a quick informed decision that ultimately can affect a patient's outcome of care management that could have a long term effect to one's health in the future.

With patient information being available in a centralized location the use of Decision support systems come into play by using this combined source to aid in care management, medication management and also drug interactions for a patient. There is a reduced likelihood of errors and this also eliminates duplication.

Even though a physician can potentially reduce his overhead through say the use of an electronic scanner instead of paper claims, and reduce the number of office staff employed at the practice. There could also be some short term unforeseen negative effects as a result of this. What happens to all the people who normally manage these functions? This is an indirect negative effect of technology in the short term, where some of these jobs will slowly be replaced by a few highly skilled specialized individuals or by computer systems.

So despite there being a positive effect to reduce healthcare costs and improve the overall strain healthcare has on the national deficit, the short term effects of job reduction from this is also impending.

SubQuestion No : 2

Q.2 The tone/attitude of the author towards the passage can be best described as:

- Ans
- 1. Narrative
 - 2. Direct
 - 3. Belittling
 - 4. Cynical

Question ID : 6395132858

Status : Answered

Chosen Option : 1

Comprehension:

A passage is given with five questions following it. Read the passage carefully and select the best answer to the given question out of the given four options.

It is well known that Technology adds a lot of efficiency when it comes to today's lifestyle, especially with regards to healthcare from what we know and hear about all the time.

The adoption of electronic health records helps eliminate a lot of repetitive testing that can add to savings and help with deficit reduction. The electronic record also makes easier for disease and care management for individuals.

The integration of information into one source can improve efficiency and help eliminate additional steps of obtaining patient information from multiple sources. Providers find it easier to perform tasks such as processing claims and billing. A provider can access a patient record with speed and ease. With all this information available a provider can also make a quick informed decision that ultimately can affect a patient's outcome of care management that could have a long term effect to one's health in the future.

With patient information being available in a centralized location the use of Decision support systems come into play by using this combined source to aid in care management, medication management and also drug interactions for a patient. There is a reduced likelihood of errors and this also eliminates duplication.

Even though a physician can potentially reduce his overhead through say the use of an electronic scanner instead of paper claims, and reduce the number of office staff employed at the practice. There could also be some short term unforeseen negative effects as a result of this. What happens to all the people who normally manage these functions? This is an indirect negative effect of technology in the short term, where some of these jobs will slowly be replaced by a few highly skilled specialized individuals or by computer systems.

So despite there being a positive effect to reduce healthcare costs and improve the overall strain healthcare has on the national deficit, the short term effects of job reduction from this is also impending.

SubQuestion No : 3

Q.3 The last paragraph mentions "the short term effects of job reduction from this is also impending". Identify the most appropriate replacement of the word 'impending' as used in the context of the passage.

- Ans
- 1. approaching
 - 2. unlikely
 - 3. distant
 - 4. unreachable

Question ID : 6395132857

Status : Answered

Chosen Option : 3

Comprehension:

A passage is given with five questions following it. Read the passage carefully and select the best answer to the given question out of the given four options.

It is well known that Technology adds a lot of efficiency when it comes to today's lifestyle, especially with regards to healthcare from what we know and hear about all the time.

The adoption of electronic health records helps eliminate a lot of repetitive testing that can add to savings and help with deficit reduction. The electronic record also makes easier for disease and care management for individuals.

The integration of information into one source can improve efficiency and help eliminate additional steps of obtaining patient information from multiple sources. Providers find it easier to perform tasks such as processing claims and billing. A provider can access a patient record with speed and ease. With all this information available a provider can also make a quick informed decision that ultimately can affect a patient's outcome of care management that could have a long term effect to one's health in the future.

With patient information being available in a centralized location the use of Decision support systems come into play by using this combined source to aid in care management, medication management and also drug interactions for a patient. There is a reduced likelihood of errors and this also eliminates duplication.

Even though a physician can potentially reduce his overhead through say the use of an electronic scanner instead of paper claims, and reduce the number of office staff employed at the practice. There could also be some short term unforeseen negative effects as a result of this. What happens to all the people who normally manage these functions? This is an indirect negative effect of technology in the short term, where some of these jobs will slowly be replaced by a few highly skilled specialized individuals or by computer systems.

So despite there being a positive effect to reduce healthcare costs and improve the overall strain healthcare has on the national deficit, the short term effects of job reduction from this is also impending.

SubQuestion No : 4

Q.4 Which of the following options is definitely false as per the views expressed by the author?

- Ans
- 1. The technological aid makes processing claims and billing easier.
 - 2. The adoption of electronic health records eliminate repetitive testing.
 - 3. The decision support systems come into play by using combined source to aid in care management, medication management and drug interactions for a patient.
 - 4. The integration of patient information in to one source can lead to data misuse and issues of unauthorized data usage.

Question ID : 6395132855

Status : Not Answered

Chosen Option : --

Comprehension:

A passage is given with five questions following it. Read the passage carefully and select the best answer to the given question out of the given four options.

It is well known that Technology adds a lot of efficiency when it comes to today's lifestyle, especially with regards to healthcare from what we know and hear about all the time.

The adoption of electronic health records helps eliminate a lot of repetitive testing that can add to savings and help with deficit reduction. The electronic record also makes easier for disease and care management for individuals.

The integration of information into one source can improve efficiency and help eliminate additional steps of obtaining patient information from multiple sources. Providers find it easier to perform tasks such as processing claims and billing. A provider can access a patient record with speed and ease. With all this information available a provider can also make a quick informed decision that ultimately can affect a patient's outcome of care management that could have a long term effect to one's health in the future.

With patient information being available in a centralized location the use of Decision support systems come into play by using this combined source to aid in care management, medication management and also drug interactions for a patient. There is a reduced likelihood of errors and this also eliminates duplication.

Even though a physician can potentially reduce his overhead through say the use of an electronic scanner instead of paper claims, and reduce the number of office staff employed at the practice. There could also be some short term unforeseen negative effects as a result of this. What happens to all the people who normally manage these functions? This is an indirect negative effect of technology in the short term, where some of these jobs will slowly be replaced by a few highly skilled specialized individuals or by computer systems.

So despite there being a positive effect to reduce healthcare costs and improve the overall strain healthcare has on the national deficit, the short term effects of job reduction from this is also impending.

SubQuestion No : 5

Q.5 What according to the passage is the indirect negative impact of technology in the long run?

- Ans
- 1. People's inherent unwillingness to put their trust in the medical fraternity.
 - 2. Reduction in the overhead healthcare cost by reducing the number of office staff.
 - 3. The government's increased interference in the pharmaceutical company's administrative affairs.
 - 4. The jobs being replaced by a few highly skilled individuals or by computer systems.

Question ID : 6395132856

Status : Not Answered

Chosen Option : --

Q.6 A sentence with an underlined word is given below. Select the most appropriate SYNONYM for the underlined word from the given options.

She was completely baffled by his strange behaviour.

- Ans
- 1. Assured
 - 2. Peaceful
 - 3. Convinced
 - 4. Confused

Question ID : 6395132887

Status : Answered

Chosen Option : 4

Q.7 Identify the correct statement from the options given.

- Ans 1. Rachel, who served as a model from Chad's sister, thought her interpretation of the role was the best.
2. Rachel, who served as a model for Chad's sister, thought her interpretation of the role was the best.
3. Rachel, who serves as a model for Chad's sister, thought her interpretation of the role was the best.
4. Rachel, who served as a model for Chad's sister, thought her interpretation of a role was the best.

Question ID : 6395132873
Status : Answered
Chosen Option : 3

Q.8 A sentence has been given in Active/Passive voice. Out of the four alternatives suggested, select the one which best expresses the same sentence in Passive/Active voice.

Somebody has stolen the purse which I had bought recently.

- Ans 1. I had bought a purse recently and it has been stolen.
2. My purse which had been bought recently by her has been stolen.
3. My purse which I had bought recently has been stolen.
4. The purse which had been bought recently by me has been stolen.

Question ID : 6395132886
Status : Answered
Chosen Option : 4

Q.9 Identify the segment in the sentence which contains the grammatical error from the given options. If there is no error, mark your answer as 'No error'.

He feels badly about the defeat

- Ans 1. He feels
2. badly
3. about the defeat
4. No error,

Question ID : 6395132860
Status : Answered
Chosen Option : 3

Q.10 In the following sentence some parts in BOLD letters. Choose the better of the two alternatives for ever such part and then choose the best combination as your answer.

Her son doesn't (A)/ didn't (B) have the faintest idea what he will (A)/ will he (B) do after leaving(A)/ he had left(B) school.

- Ans 1. BBA
2. AAA
3. ABB
4. BAB

Question ID : 6395132869
Status : Answered
Chosen Option : 3

Q.11 Identify the segment in the sentence which contains the grammatical error from the given options. If there is no error, mark your answer as 'No error'.

The team played real good for the first five minutes

- Ans
- 1. The team played
 - 2. real good for the
 - 3. first five minutes
 - 4. No error

Question ID : 6395132859
Status : Answered
Chosen Option : 2

Q.12 A sentence has been given in Active/Passive voice. Out of the four alternatives suggested, select the one which best expresses the same sentence in Passive/Active voice.

His subject accused him of various atrocities.

- Ans
- 1. His subject accused that he had done various atrocities.
 - 2. He was accused of various atrocities by his subject.
 - 3. It was accused by his subject that he had done various atrocities.
 - 4. His subject accused him of various atrocities.

Question ID : 6395132882
Status : Answered
Chosen Option : 2

Q.13 Identify the segment in the sentence which contains the grammatical error from the given options.

The government's proposal has been set alarm bells ringing for people on low incomes.

- Ans
- 1. ringing for people
 - 2. on low incomes.
 - 3. has been set alarm bells
 - 4. The government's proposal

Question ID : 6395132906
Status : Answered
Chosen Option : 3

Q.14 Choose the most appropriate combination of preposition in the given sentences.

His friends condoled _____ him on his bereavement.
The approach to this pan of the book is similar _____ that to the other part,
He has reverted _____ his former job.
I am sick _____ the entire episode.

- Ans
- 1. of, on, in, by
 - 2. before, to, to, in
 - 3. between, to, into, too
 - 4. at, by, with, on

Question ID : 6395132868
Status : Answered
Chosen Option : 2

Q.15 A sentence has been given in Active/Passive voice. Out of the four alternatives suggested, select the one which best expresses the same sentence in Passive/Active voice.

How much a month are you paid?

- Ans
- 1. How much a month do you pay them?
 - 2. In a month how much do you pay?
 - 3. How much a month do you pay?
 - 4. How much a month do they pay you?

Question ID : 6395132884
Status : Answered
Chosen Option : 4

Q.16 Choose the most appropriate combination of preposition in the given sentences.

Where have you been _____?
He lives _____ Delhi in India.
I would occupy myself with no more important business than _____ this.
He has not been cured _____ his disease.

- Ans
- 1. with, before, at, in
 - 2. with, between, no preposition, of
 - 3. no preposition, in, no preposition, of
 - 4. no preposition, with, in, at

Question ID : 6395132865
Status : Answered
Chosen Option : 2

Q.17 Identify the segment in the sentence which contains the grammatical error from the given options.

The customer insisted to speaking to the manager personally.

- Ans
- 1. insisted to
 - 2. manager personally.
 - 3. The customer
 - 4. speaking to the

Question ID : 6395132907
Status : Answered
Chosen Option : 4

Q.18 Identify the segment in the sentence which contains the grammatical error from the given options. If there is no error, mark your answer as 'No error'.

The programme which came on television these days in the evenings is very interesting.

- Ans
- 1. The programme which
 - 2. these days in the evenings is very interesting.
 - 3. came on television
 - 4. No error

Question ID : 6395132913
Status : Answered
Chosen Option : 2

Q.19 Select the most appropriate SYNONYM of the given word.

Guilty

- Ans
- 1. Virtuous
 - 2. Innocent
 - 3. Unrepentant
 - 4. Accountable

Question ID : 6395132889

Status : Answered

Chosen Option : 1

Q.20 Choose the most appropriate combination of preposition in the given sentences.

My brother is deficient _____ mathematics.

We are expecting the reply _____ evening.

The final decision rests _____ the director.

The river flows _____ the bridge.

- Ans
- 1. by, in with, on
 - 2. in, by, with, under
 - 3. in, on, in, by
 - 4. under, by, with, it

Question ID : 6395132866

Status : Answered

Chosen Option : 2

Q.21 Select the most appropriate ANTONYM of the given word.

Dabbler

- Ans
- 1. Loyal
 - 2. Professional
 - 3. Truthful
 - 4. Talkative

Question ID : 6395132899

Status : Answered

Chosen Option : 4

Q.22 Select the most appropriate SYNONYM of the given word.

Harsh

- Ans
- 1. Soft-spoken
 - 2. Whisper
 - 3. Polite
 - 4. Scold

Question ID : 6395132888

Status : Answered

Chosen Option : 3

Q.23 Two sentences are given below. Choose the correct conjunction to join the given sentences.

Several members have not replied for over three years.

Their names have therefore been removed from the mailing list.

- Ans
- 1. But
 - 2. Yet
 - 3. Else
 - 4. And

Question ID : 6395132874
Status : Answered
Chosen Option : 2

Q.24 In the following question, out of the four alternatives, select the alternative which is the best substitute of the phrase.

A funeral song or tune

- Ans
- 1. Elixir
 - 2. Hymn
 - 3. Dirge
 - 4. Flux

Question ID : 6395132893
Status : Answered
Chosen Option : 2

Q.25 In the following question a sentence is given in Direct/Indirect speech. Out of the four alternatives choose the one which best expresses the sentence in Indirect/Direct Speech.

"How dare you come in without permission?" she asked.

- Ans
- 1. She said to him to dare to come in without permission.
 - 2. She asked how he could dared to come in without permission.
 - 3. She asked him how he dared to come in without permission
 - 4. She told him if he could dare to come in without permission.

Question ID : 6395132879
Status : Answered
Chosen Option : 2

Q.26 Choose the most appropriate combination of preposition in the given sentences.

Roberta and the psychologist disagreed, however, when Roberta said that the semicolon _____ the best punctuation mark.

The director said that he _____ know what to make of Roberta's punctuation obsession.

- Ans
- 1. is, didn't
 - 2. is, doesn't
 - 3. was, didn't
 - 4. were, don't

Question ID : 6395132876
Status : Answered
Chosen Option : 3

Q.27 A sentence has been given in Active/Passive voice. Out of the four alternatives suggested, select the one which best expresses the same sentence in Passive/Active voice.

Someone saw him stealing.

- Ans
- 1. He was seen stealing by someone.
 - 2. He is seen by someone stealing
 - 3. He was seen by one when he is stealing.
 - 4. He had been seen stealing.

Question ID : 6395132883
Status : Answered
Chosen Option : 1

Q.28 In the following sentence some parts in BOLD letters. Choose the better of the two alternatives for ever such part and then choose the best combination as your answer.

"You don't have to be (nasty(A)/nastily(B))!" replied the duck.
The two creatures (swift(A)/swiftly(B)) circled each other, both looking for a (clear(A)/clearly(B)) advantage.

- Ans
- 1. ABA
 - 2. ABB
 - 3. BBA
 - 4. AAB

Question ID : 6395132871
Status : Answered
Chosen Option : 1

Q.29 Identify the segment in the sentence which contains the grammatical error from the given options. If there is no error, mark your answer as 'No error'.

You would not like others to blame you for the loss, wouldn't you?

- Ans
- 1. You would not like others
 - 2. to blame you for the loss,
 - 3. wouldn't you?
 - 4. No error

Question ID : 6395132912
Status : Answered
Chosen Option : 2

Q.30 Identify the segment in the sentence which contains the grammatical error from the given options. If there is no error, mark your answer as 'No error'.

You are very unreliable to be trusted

- Ans
- 1. unreliable to
 - 2. You are very
 - 3. No error
 - 4. be trusted

Question ID : 6395132863
Status : Answered
Chosen Option : 2

Q.31 Choose the best alternative among the four given which can replace the part in bold to make the sentence grammatically correct.

Even though leprosy has been eliminated from India as a public health problem in 2005, a dreaded disease continue to raise its ugly head periodically.

- Ans
- 1. a dreaded disease continues to raise its
 - 2. an dreaded disease continues to raise its
 - 3. the dreaded disease continues to raise its
 - 4. the dreaded disease continue rising its

Question ID : 6395132911

Status : Answered

Chosen Option : 3

Q.32 Choose the best alternative among the four given which can replace the part in bold to make the sentence grammatically correct.

The way people consume entertainment is changing at a fast rate globally and nowhere so rapidly as we have seen in India.

- Ans
- 1. so rapidly as we may have seen in India
 - 2. so rapidly as we might saw in India
 - 3. as rapidly as we have seen in India
 - 4. more rapidly as we saw in India

Question ID : 6395132910

Status : Answered

Chosen Option : 3

Q.33 In the following sentence some parts in BOLD letters. Choose the better of the two alternatives for ever such part and then choose the best combination as your answer.

(Since(A)/Because(B)) he is quite old it isn't (at all(A)/ after all(B)) surprising (but (A)/ that (B)) he can't run as fast as you can.

- Ans
- 1. AAB
 - 2. ABA
 - 3. BAB
 - 4. AAA

Question ID : 6395132870

Status : Answered

Chosen Option : 1

Q.34 Select the most appropriate SYNONYM of the given word.
Devious

- Ans
- 1. Honest
 - 2. Distinguished
 - 3. Two-faced
 - 4. Supreme

Question ID : 6395132890

Status : Answered

Chosen Option : 4

Q.35 A sentence has been given in Active/Passive voice. Out of the four alternatives suggested, select the one which best expresses the same sentence in Passive/Active voice.

Who knows you?

- Ans
- 1. To whom are you known?
 - 2. By whom are you known?
 - 3. Whom are you known by?
 - 4. Who are you known?

Question ID : 6395132885
Status : Answered
Chosen Option : 2

Q.36 In the statement below, a part of the sentence is highlighted bold. Out of the four options which follow, choose the one which best replaces the highlighted bold part. If no replacement is required, select No improvement. One of my drawbacks is that I did

not have tolerance of ambiguity.

- Ans
- 1. do not have
 - 2. no improvement
 - 3. did not had
 - 4. am not

Question ID : 6395132905
Status : Answered
Chosen Option : 1

Q.37 Select the most appropriate meaning of the given idiom.

Bite the bullet

- Ans
- 1. to amuse yourself by doing something unpleasant
 - 2. to restrain yourself from doing something unpleasant
 - 3. to dislike yourself for having done something unpleasant
 - 4. to force yourself to do something unpleasant

Question ID : 6395132902
Status : Answered
Chosen Option : 4

Q.38 A sentence with an underlined word is given below. Select the most appropriate ANTONYM for the underlined word from the given options.

If cancers are spotted early there's a high chance of survival.

- Ans
- 1. Living
 - 2. Continuance
 - 3. Extinction
 - 4. Advancement

Question ID : 6395132897
Status : Answered
Chosen Option : 2

Q.39 In the following question, out of the four alternatives, select the alternative which is the best substitute of the phrase.

A disease that causes a large number of people to die

- Ans 1. Pestilence
 2. Bariatric
 3. Congenital
 4. Sporadic

Question ID : 6395132892
Status : Answered
Chosen Option : 3

Q.40 Choose the most appropriate combination of preposition in the given sentences.

The commentator seems to be enamoured _____ quotes from Shakespeare.
The poor man is beset _____ difficulties.
The weather was not very congenial _____ him.
We should adapt _____ the changing times.

- Ans 1. off, with, into, of
 2. of, with, to, to
 3. of, on, in, by
 4. with, at, in, off

Question ID : 6395132867
Status : Answered
Chosen Option : 2

Q.41 Choose the most appropriate combination of preposition in the given sentences.

Narasimha Rao is distinguished in the cartoons _____ his pout.
Patanjali is an authority _____ Sanskrit grammar.
He is a descendant _____ the Mughal royalty.
The shopkeeper deals _____ cotton and cloth.

- Ans 1. into, for, off, of
 2. on, by of, in
 3. with, of, for, no preposition
 4. by, on, of, in

Question ID : 6395132864
Status : Answered
Chosen Option : 2

Q.42 Identify the segment in the sentence which contains the grammatical error from the given options. If there is no error, mark your answer as 'No error'.

The dead are peacefully sleeping in their graves

- Ans 1. in their graves
 2. No error
 3. The dead are
 4. peacefully sleeping

Question ID : 6395132862
Status : Answered
Chosen Option : 1

Q.43 Select the most appropriate SYNONYM of the given word.

Bucolic

- Ans
- 1. Conservative
 - 2. Rural
 - 3. Urban
 - 4. Ancient

Question ID : 6395132891

Status : Answered

Chosen Option : 1

Q.44 Select the most appropriate ANTONYM of the given word.

Smart

- Ans
- 1. Ugly
 - 2. Pretty
 - 3. Handsome
 - 4. Beautiful

Question ID : 6395132895

Status : Answered

Chosen Option : 1

Q.45 Choose the most appropriate combination of words for the given sentence.

The psychologist complained that quotation marks _____ him in and _____ him feel trapped.

- Ans
- 1. hem, made
 - 2. hemmed, made
 - 3. hem, make
 - 4. hemmed, make

Question ID : 6395132875

Status : Answered

Chosen Option : 2

Q.46 In the following question a sentence is given in Direct/Indirect speech. Out of the four alternatives choose the one which best expresses the sentence in Indirect/Direct Speech.

He said, 'My God! I am ruined.'

- Ans
- 1. He exclaimed that he was ruined.
 - 2. He exclaimed sadly that he ruined.
 - 3. He exclaimed sadly that he had been ruined.
 - 4. He exclaimed sadly that he was ruined.

Question ID : 6395132877

Status : Answered

Chosen Option : 2

Q.47 Choose the best alternative among the four given which can replace the part in bold to make the sentence grammatically correct.

The Bishnoi community of Rajasthan and parts of Punjab believe that crop yield increase in fields where black buck had gazed.

- Ans
- 1. crops yields decreases in fields where black buck was gazing
 - 2. crop yields increases in fields where black buck had gazed.
 - 3. that crop yield increase in fields where black buck were gazing.
 - 4. crops yields increases in fields where black buck was gazing

Question ID : 6395132909
Status : Answered
Chosen Option : 2

Q.48 Select the most appropriate meaning of the given idiom.

Beat a dead horse

- Ans
- 1. A significant effort
 - 2. A joint effort
 - 3. A futile effort
 - 4. A deliberate effort

Question ID : 6395132901
Status : Answered
Chosen Option : 1

Q.49 In the following question a sentence is given in Direct/Indirect speech. Out of the four alternatives choose the one which best expresses the sentence in Indirect/Direct Speech.

"I wonder how the magician shows such wonderful magic!" said the boy.

- Ans
- 1. The boy wondered how the magician would show such wonderful magic.
 - 2. The boy wondered how such wonderful magic shown by the magician.
 - 3. Thy boy wondered how the magician showed such wonderful magic
 - 4. The boy said how he wondered how the magician showed such wonderful magic.

Question ID : 6395132880
Status : Answered
Chosen Option : 3

Q.50 A sentence with an underlined word is given below. Select the most appropriate ANTONYM for the underlined word from the given options.

Birds are abundant in the tall vegetation.

- Ans
- 1. Plentiful
 - 2. Copious
 - 3. Scanty
 - 4. Ample

Question ID : 6395132896
Status : Answered
Chosen Option : 4

Q.51 In the following question a sentence is given in Direct/Indirect speech. Out of the four alternatives choose the one which best expresses the sentence in Indirect/Direct Speech.

She asked him what was it that made him stronger and braver than other men.

- Ans
- 1. She asked, "What is it that made you stronger and braver than other men?"
 - 2. She asked, "What made you stronger and braver than other men?"
 - 3. She asked, "What is it that makes you stronger and braver than other men?"
 - 4. She asked, "What was it that made you stronger and braver than other men?"

Question ID : 6395132881

Status : Answered

Chosen Option : 3

Q.52 In the following sentence some parts in BOLD letters. Choose the better of the two alternatives for every such part and then choose the best combination as your answer.

"You are (extreme(A)/extremely(B)) territorial about these pipes," added the duck.
The alligator retreated (fearful(A)/fearfully(B)) as the duck quacked (sharp(A)/sharply(B)).

- Ans
- 1. BBA
 - 2. BBB
 - 3. AAA
 - 4. AAB

Question ID : 6395132872

Status : Answered

Chosen Option : 2

Q.53 Select the most appropriate ANTONYM of the given word.

Dubious

- Ans
- 1. Intelligent
 - 2. Sharp
 - 3. Certain
 - 4. Drastic

Question ID : 6395132898

Status : Answered

Chosen Option : 1

Q.54 In the statement given below, a part of the sentence is highlighted bold. Out of the four options which follow choose the one which best replaces the highlighted phrase.

The use of radar as well as two-way radio paging make it possible for state police to intercept most speeders.

- Ans
- 1. makes it possible
 - 2. allows the possibility
 - 3. make possible
 - 4. makes possible

Question ID : 6395132904

Status : Answered

Chosen Option : 4

Q.55 In the following question a sentence is given in Direct/Indirect speech. Out of the four alternatives choose the one which best expresses the sentence in Indirect/Direct Speech.

Filled with shame, she replied that she could not help snoring and hoped that her son would understand.

- Ans
- 1. "I am sorry but I can't help snoring, son," she said. "I hope you understand."
 - 2. "I can't help snoring, son" she said, filled with shame. "I hope you will understand."
 - 3. "Son, I can't help it, but I hope you understand that I snore," she said.
 - 4. "I hope you understand that I can't help snoring," she told her son.

Question ID : 6395132878
Status : Answered
Chosen Option : 2

Q.56 Select the most appropriate meaning of the given idiom.

Red-handed

- Ans
- 1. To catch someone doing something illegal
 - 2. To try to arrest someone without any evidence
 - 3. To discover a murderer using the clues
 - 4. To catch a thief who steals red paints

Question ID : 6395132903
Status : Answered
Chosen Option : 1

Q.57 Identify the segment in the sentence which contains the grammatical error from the given options.

She wept for joy when she was told that her husband is still alive.

- Ans
- 1. when she was told
 - 2. She wept for joy
 - 3. is still alive.
 - 4. that her husband

Question ID : 6395132908
Status : Answered
Chosen Option : 1

Q.58 Select the idiom that can best substitute the bracketed word in the sentence given below.

He (confessed) his guilt in front of god.

- Ans
- 1. to move heaven and earth
 - 2. Nip in the bud
 - 3. Cry for the moon
 - 4. make a clean breast of it

Question ID : 6395132894
Status : Answered
Chosen Option : 4

Q.59 Identify the segment in the sentence which contains the grammatical error from the given options. If there is no error, mark your answer as 'No error'.

He was too exhausted when he got home

- Ans
- 1. he got home
 - 2. exhausted when
 - 3. No error
 - 4. He was too

Question ID : 6395132861
Status : Answered
Chosen Option : 3

Q.60 Select the most appropriate meaning of the idiom
Go against the grain.

- Ans
- 1. Something that we can accept with difficulty
 - 2. Something that is ugly and unpopular
 - 3. Something in conflict with one's value system
 - 4. Something done deliberately

Question ID : 6395132900
Status : Answered
Chosen Option : 3

www.studytosuccess.in